

Service

- Slovenia
- Germany
- Spain
- Russia
- USA
- Mexico
- Brazil
- Argentina
- South Africa

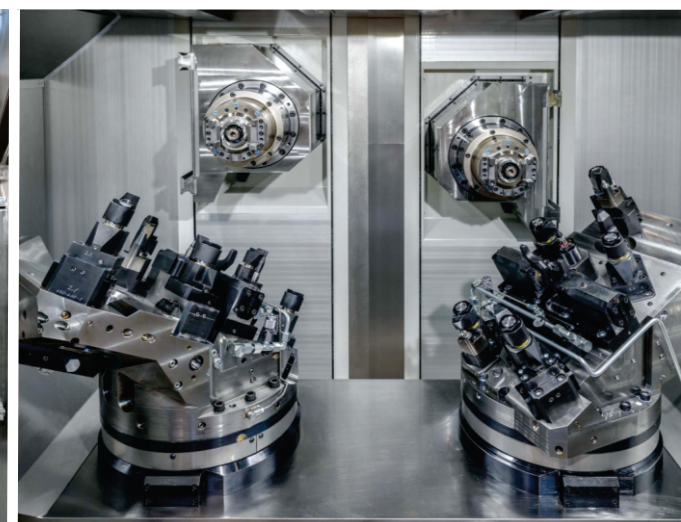
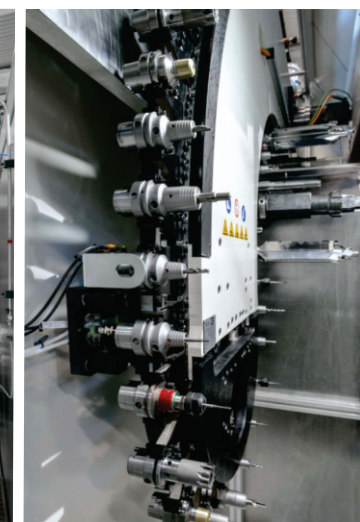
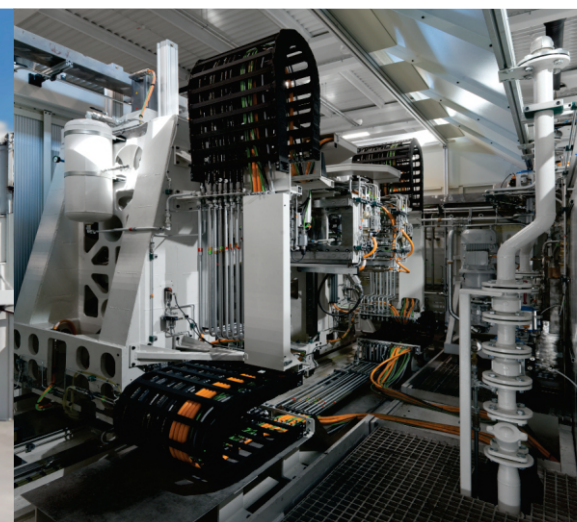
Representative Offices

- Germany
- France
- The Czech Republic
- China
- USA
- Brazil
- Argentina
- South Africa



Universal Double-Spindle Center

TANDEM 700 L



Unior d.d.
Kovaška cesta 10
SI - 3214 Zreče



strojna.oprema@unior.si
www.unior-werkzeugmaschinen.com



Machine concept

TANDEM 700 L is a high-tech processing center for high productivity and large production. Practically oriented and enhanced modular design with rigid components, guarantee a high stability, constant precision, high productivity and high operability.

Advantages

Benefits and advantages of the Tandem 700 against Standard Double-Spindle BAZ:

- High productivity
- High flexibility
- Processing of mirror workpieces (L & R)
- Processing of high precision workpieces
- NC adjustments thru processing axis

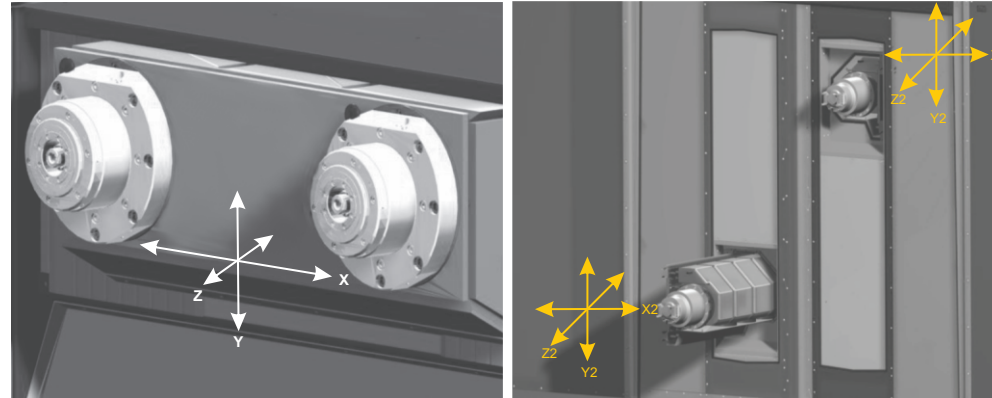
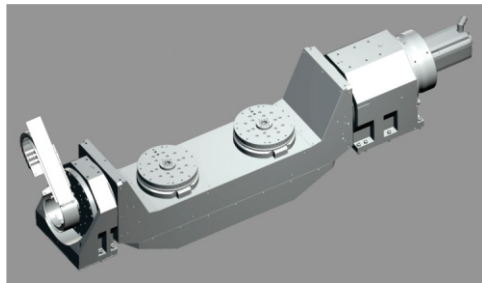
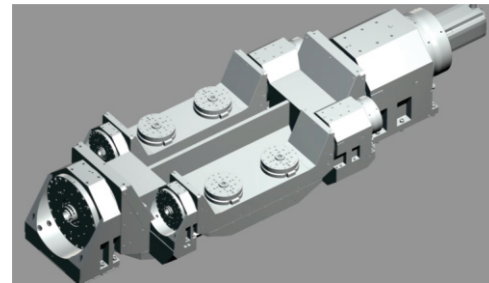


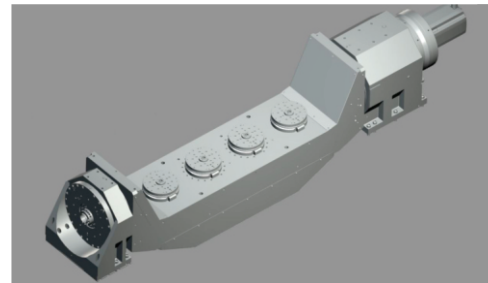
Table possibilities



NC turntable with 2 NC planets and NC drive.



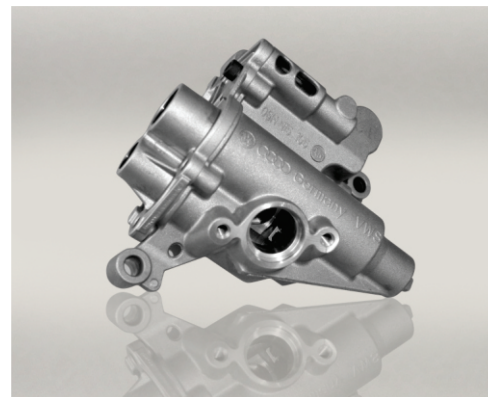
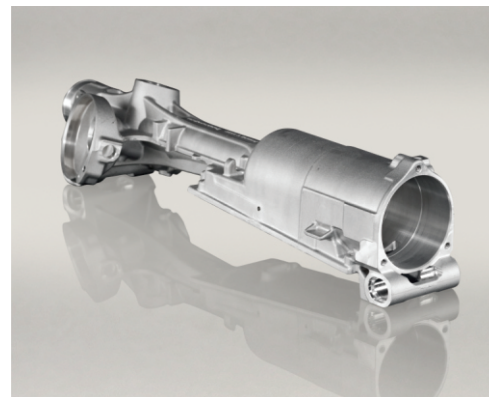
Turning unit with 2 NC swivel table each with 2 NC planets. Suitable for neutral cycle time while unloading.



NC turntable with 4 NC planets suitable for smaller workpieces.

Workpiece Spectrum

Both special workpiece-specific and long-term experiences, which resulted in multitude of worldwide installations. The Unior technology manifests itself thru symbiosis of the specific, innovation driven technology and product know-how of corporate group. UNIOR covers all the possible workpieces for the automotive drive-train, vehicle body parts, structural parts and different housings.



Universal Double-Spindle Center TANDEM 700 L



Tecnical Data

Spindle distance	min/max	mm	300-1100
Planet Distance		mm	700
Workspace area (2x)	X-Axis	mm	800 (+/-400)
	Y-Axis	mm	800
	Z-Axis	mm	700
Working Spindle (2x)	Front bearing	mm	70
	Tool Holder		HSK 63 / HSK80
	RPM mx.	1/min	20 000
Power/Torque (2x)	P = 100 % (3000 - 20 000)	kW	28 (38)
	M = 100 % (3000)	Nm	36 (105)
Advance power (2x)	X-Axis (linear)	kN	8,1 - 20,7
	Y-Axis	kN	7,1
	Z-Axis (linear)	kN	3,8 - 10,3
Axis speed (2x)	X-Axis (linear)	m/min	80
	Y-Axis	m/min	70
	Z-Axis (linear)	m/min	100
Acceleration (2x)	X-Axis (linear)	m/s ²	5
	Y-Axis	m/s ²	5
	Z-Axis (linear)	m/s ²	10
Precision	Position tolerance	mm	<0,01
	Position deviation	mm	0,005

Tool magazine	Storage capacity		72 (120)
	Tool diameter max.	mm	240
	Tool length max.	mm	420
	Tool weight max.	kg	14
	Chip-to-Chip time max.	s	5
Turntable/Pallet (2x)	Pallet Size	mm	d = 500
	NC-Turntable	1/min	100
	Permissible load	kg	300
Coolant	Through the spindle	l/min	60
	Pump pressure	bar	70
Space needed (without podium)	Machine height	mm	3700
	Machine width	mm	5100
	Machine length	mm	5300
Workpiece size	Lenght	mm	500 (teor. 800)
	Widht	mm	500 (teor. 800)
	Height	mm	600
Cooling (option)	MQL		
	Emulsion		
	Oil		
Controls			Siemens 840D SL